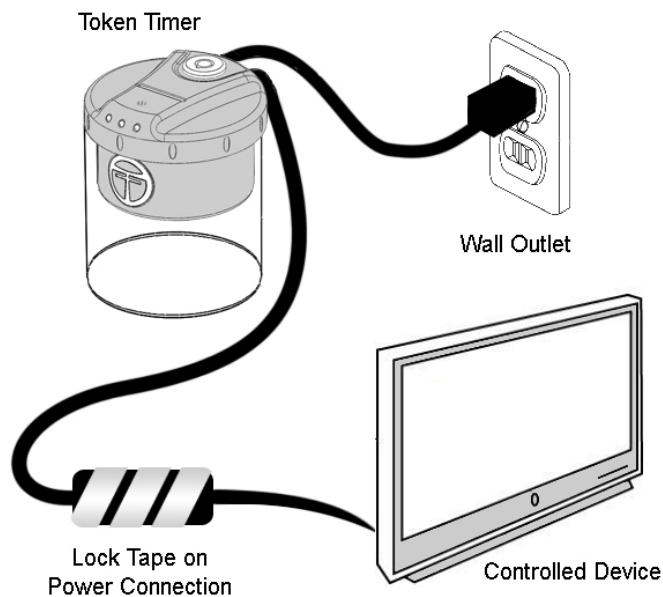


TOKEN TIMER

IN THE BOX:

1. Token Timer Unit
2. 20 Tokens
3. 2 keys
4. Lock Tape



SETUP:

1. Plug the power cord of the Token Timer into a wall outlet.
2. Plug the power cord of the device you would like to control into the female power cord of the Token Timer
3. Wrap the connection between the Token Timer and the device securely with the lock tape.

USE:

1. Insert tokens to allow power to the controlled device. Each token allows 35 minutes of power, and Token Timer will add time for multiple tokens.
2. The lights will flash as each token expires, and shut off one by one for the last token.
3. The buzzer will sound when one minute remains before the power is cut off. *
4. To retrieve tokens, insert and turn the key in the top of the Token Timer and twist the lid.
5. Leaving the key engaged also activates Parent Mode, which allows continuous use as long as the key is in the unit.

TIPS:

1. Keep the keys in a secure location.
2. Keep extra tokens secure by leaving them inside Token Timer.
3. Use parent mode to allow access for long periods of time.
4. Determine a weekly allowance for Tokens, or use them on a reward basis.
5. Use Token Timer to monitor and limit you own usage.
6. Check tokentimers.com for available accessories and more helpful usage tips.
7. Purchase additional Token Timers to control these and many other devices:

- Televisions
- Video Game Systems
- Computer Monitors
- Stereo Systems
- Video Projectors
- Guitar Amplifiers

* Some devices such as video projectors require a short length of power for proper shut down. In this case be sure to power down the device before time expires on the Token Timer. Some devices will be returned to factory defaults when power is cut. To observe how Token Timer will affect your device when power is cut, unplug the device.



WARNING:

To avoid risk of electric shock, do not attempt to disassemble or modify this device in any way.



WARNING:

Tokens may present choking hazard for small children. Token Timer is intended for ages 4 and up.

- Consult the user manual and installation instructions for devices you wish to control prior to installing to ensure that the use of Token Timer is suitable for your application, and does not constitute misuse of said device according to the manufacturer.
- Do not exceed a combined load of 10 Amps or 1000 Watts.
- Use this device only for the purposes outlined in these instructions.

WARRANTY INFORMATION

It is recommended that at the time of purchase, you verify that all components are complete in this package.

This product is warranted to be free of defects in material and workmanship for ninety (90) days from the date of purchase as shown on the invoice or receipt. If a hardware defect arises and a valid claim is received within the Warranty Period, at its option and to the extent permitted by law, Token Timer LLC will either (1) repair the product at no charge, using new or refurbished replacement parts, (2) exchange the product with a product that is new or which has been manufactured from new or serviceable used parts and is at least functionally equivalent to the original product, or (3) refund the purchase price of the product. Token Timer LLC may request that you replace defective parts with new or refurbished user-installable parts that Token Timer LLC provides in fulfillment of its warranty obligation. A replacement product or part, including a user-installable part that has been installed in accordance with instructions provided by Token Timer LLC, assumes the remaining warranty of the original product or thirty (30) days from the date of replacement or repair, whichever provides longer coverage for you. When a product or part is exchanged, any replacement item becomes your property and the replaced item becomes Token Timer LLC's property. Parts provided by Token Timer LLC in fulfillment of its warranty obligation must be used in products for which warranty service is claimed. When a refund is given, the product for which the refund is provided must be returned to Token Timer LLC and becomes Token Timer LLC's property. If a defect arises and a valid claim is received after the first one hundred and eighty (180) days of the Warranty Period, a shipping and handling charge may apply to any repair or exchange of the product undertaken by Token Timer LLC.

To obtain warranty service, please submit an email to warranty@tokentimers.com
You will be asked to present invoice or receipt.

EXCEPTIONS AND RESTRICTIONS

The Warranty will not be valid in the following cases:

1. When the product is not operated in accordance with the instructions concerning use and operation set forth in the owner's manual or installation instructions, and when the recommendations and warnings included are not observed.
2. When the product has been modified or dismantled partially or totally; or has been used in a negligent fashion and as a consequence has suffered damages attributable to the consumer, individual, or hardware not authorized by Token Timer LLC.
3. This warranty does not cover the damages as a result of disaster such as fire or acts of nature, including flooding, earthquake, or electric storms, etc.

TOKEN TIMER LLC
110 BROADHEAD ST.
MAZOMANIE, WI 53560
U.S.A.